

**Ordering Information**

Catalog Number: CVO-501

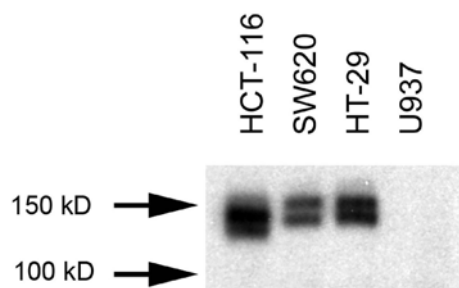
Clone number: R529

Size: 150 $\mu$ l

**Source:** rabbit  
polyclonal

**Specificity:** Human  
Ron protein

**Immunogen:** Ron c-terminal  
tail



Western blot analysis of lysates from HCT-116, SW620, HT-29, and U937 cells. U937 cells, which do not express Ron, are shown as a negative control.

## CVO-501: Polyclonal Anti-human Ron Antibody

**Background:** The RON receptor tyrosine kinase is a member of the MET proto-oncogene family. Ron is expressed in epithelial cells and tissue macrophages and contributes to the malignant progression of various cancers. RON has a MW of 180 kD composed of a 40 kD  $\alpha$ -chain and a 145 kD  $\beta$ -chain.

**Production:** Rabbits were immunized with synthetic peptides corresponding to the C-terminal tail of RON  $\beta$  chain.

**Storage:** Recommended short-term storage at 4° C and long-term storage between -20° C and -70° C. Avoid repeated freeze-thaw cycles.

**Applications:** Western Blot. Recommended antibody dilution between 1:1000 and 1:5000.

**References:**

Wang, M.-H., Ronsin, C., Gesnel, M.-C., Coupey, L., Skeel, A., Leonard, E.J. and Breathnach, R. Identification of the RON gene product as the receptor for the human macrophage stimulating protein. **Science**. 1994, 266:117-119.

Zhou, Y.-Q., Wang, D., Jiang, Y.-H., and Chen, Y.-Q., and Wang, M.H. Altered expression of the RON receptor tyrosine kinase in primary colorectal carcinomas: generation of different splicing variants and their biological significance. **Oncogene** 2003, 22:186-197.

Xu, X.-M., Wang, D., Shen, Q., Chen, Y.-Q., Wang, M.-H. RNA-mediated gene silencing of the RON receptor tyrosine kinase alters oncogenic phenotypes of human colorectal carcinoma cells. **Oncogene**, 2004, 28:8464-8474.

Wang, M.H., Lee, W, Luo, Y.L., and Yao, H.P. Altered expression of the receptor tyrosine kinase in various epithelial cancers and its contribution to tumorigenic phenotypes in thyroid cancer cells. **J. Pathol.** 2007, 213:402-411.